



# 3G/4G Wireless N Router

3G/4G and WAN  
for Ensured Access

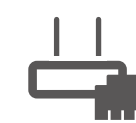
TL-MR3420



300Mbps



3G/4G Sharing

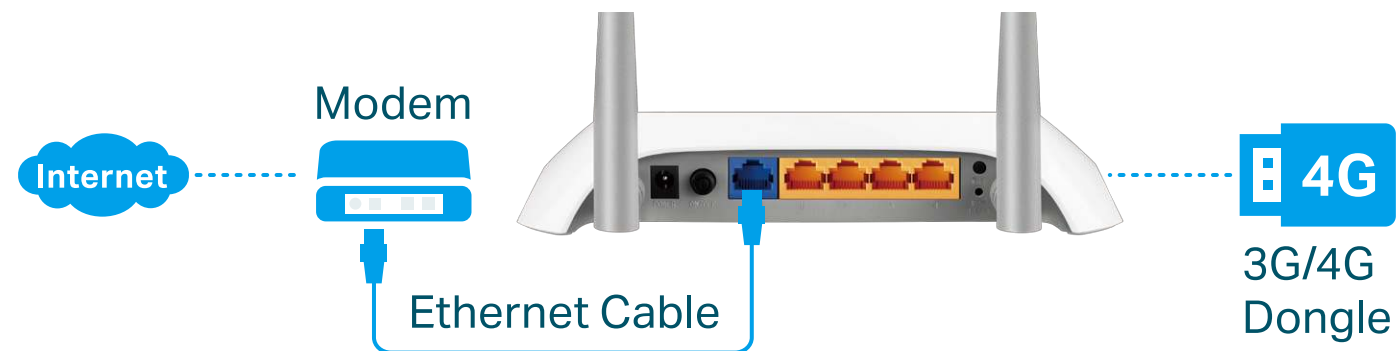


WAN Connection  
Backup

# Highlights

## Ensure Internet Access

With both 3G/4G and WAN connectivity, the TL-MR3420 always keeps you online. Take advantage of flexibility when choosing and setting up your network, and share a 3G/4G mobile broadband connection through wired or wireless connections.



## Quick and Reliable Wi-Fi

Strong Wi-Fi speeds of up to 300Mbps are perfect for daily internet access needs to devices throughout your home.



# Highlights

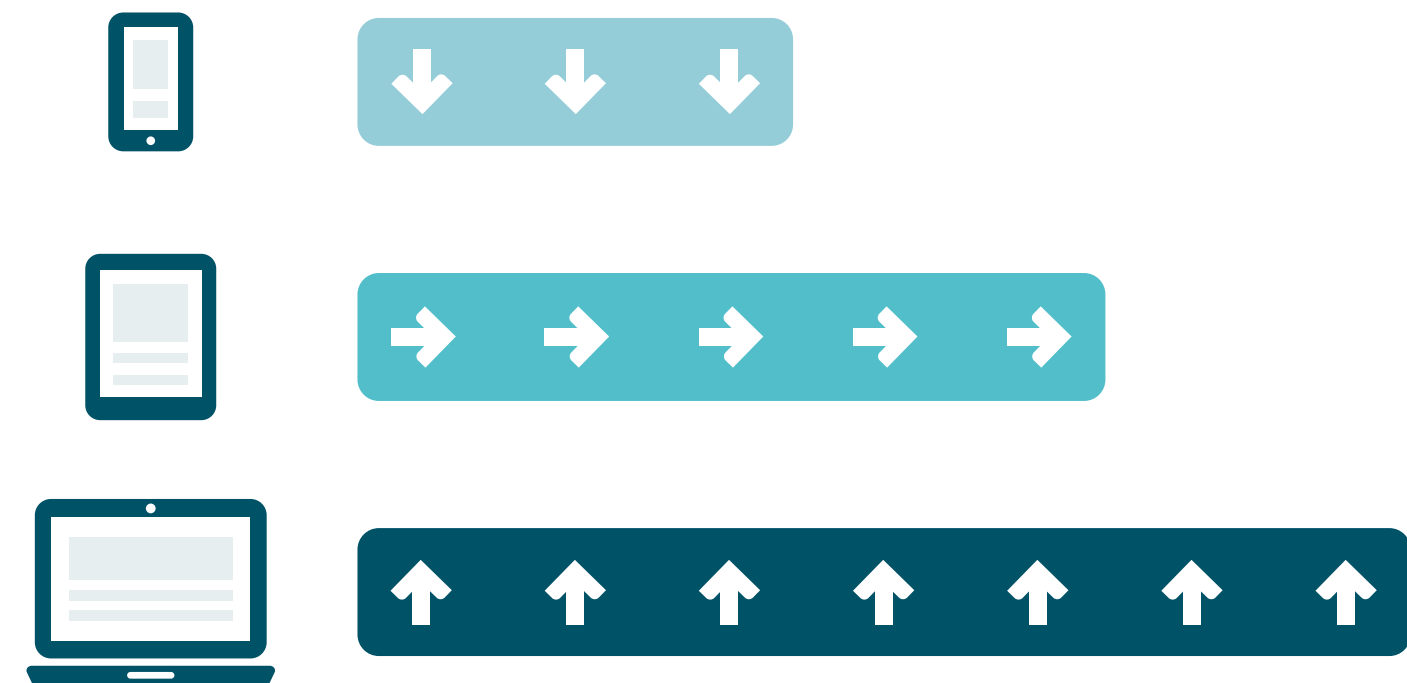
## Parental Controls

Easily manage when and how connected devices can access the internet to ensure safe, responsible surfing for your whole family.



## Bandwidth Control

Assign your preferred devices with more bandwidth to give them priority for bufferless streaming and lag-free gaming.

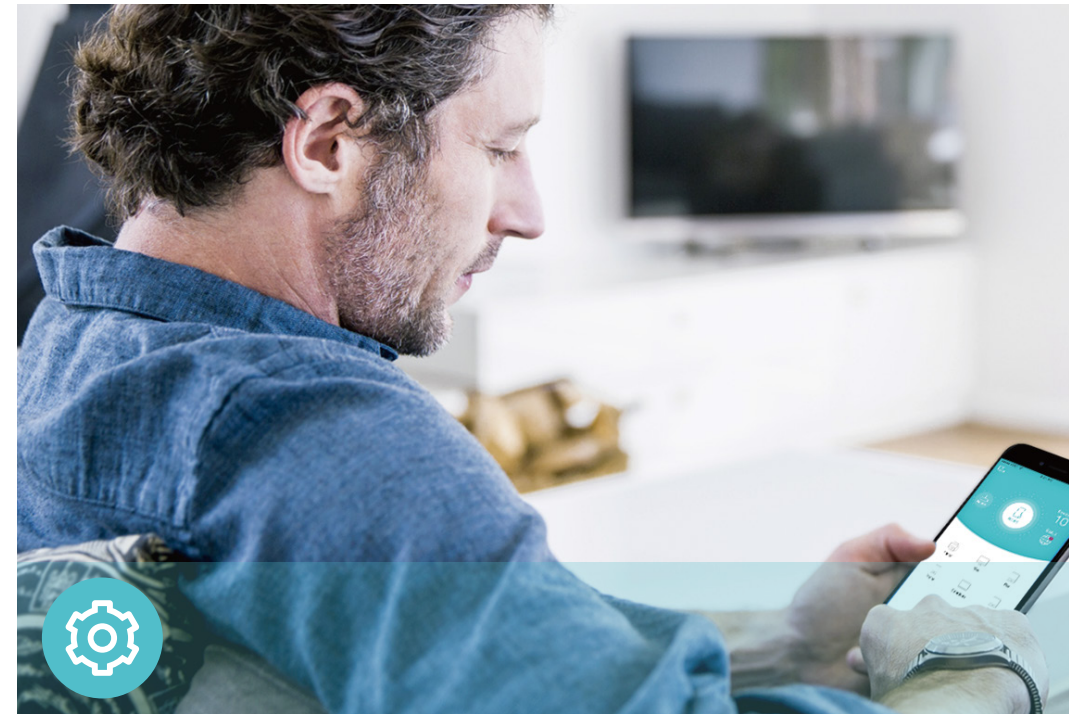


# Features



## Reliability

- Wireless N Speed – 300Mbps Wi-Fi speed meets your daily internet needs
- 802.11n – Backward compatible with 802.11b/g products
- Easy Bandwidth Management– Bandwidth Control allocates necessary speed of each connected device to ensure quality of multimedia streaming



## Ease of Use

- Intuitive Web UI – Ensures quick and simple Installation without hassle
- Fast Encryption – One-touch WPA wireless security encryption with the WPS button
- Hassle-free Management with Tether App – Network management is made easy with the TP-Link Tether App, available on any Android and iOS device



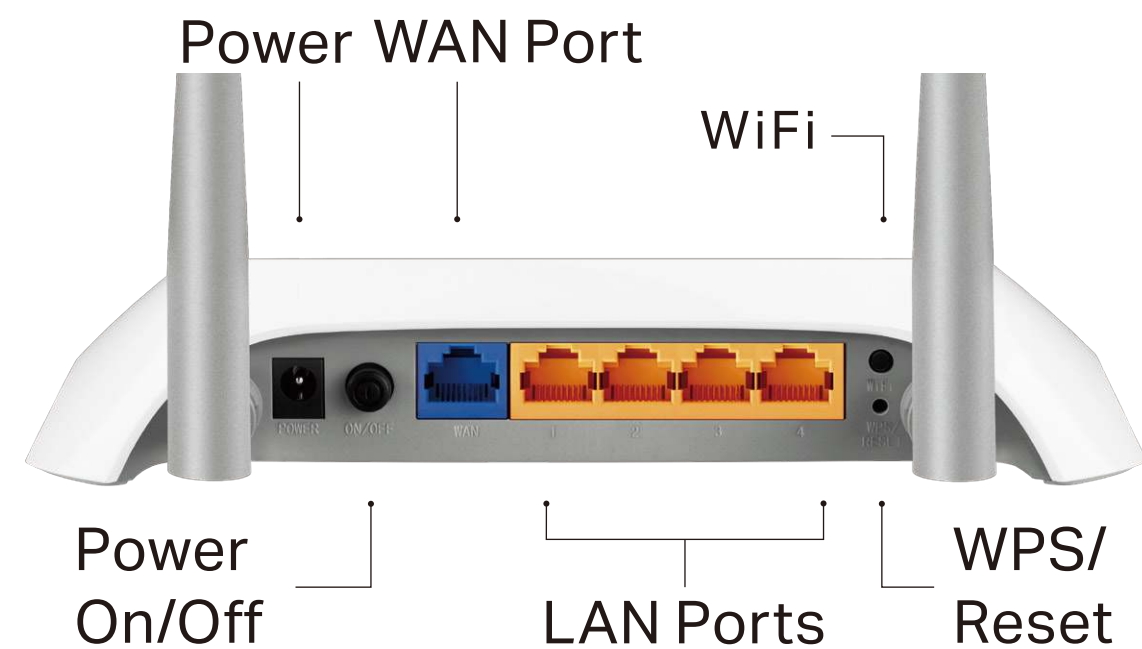
## Security

- Guest Network – Keeps your main network secure by creating a separate network for friends and visitors
- Access Control – Establishes a whitelist or blacklist to allow or restrict certain devices to access the internet
- Parental Controls – Restricts internet access time and contents for children devices
- Encryptions for Secure Network – WPA-PSK and WPA2-PSK encryptions provide active protection against security threats

# Specifications

## Hardware

- Ethernet Ports: 4 10/100Mbps LAN Ports, 1 10/100Mbps WAN Port
- Buttons: Power On/Off Button, Wi-Fi On/Off Button, WPS/Reset Button
- Antennas: Two Fixed Omni-Directional Antennas
- External Power Supply: 12V/1A
- Dimensions (W x D x H): 8.0× 5.4×1.7 in. (204×138×44mm)



## Wireless

- Wireless Standards: IEEE 802.11b/g/n
- Frequency: 2.4GHz
- Signal Rate: 300Mbps
- Transmit Power: < 20dBm
- Reception Sensitivity:  
2.4GHz:  
270M: -70dBm@10% PER  
130M: -73dBm@10% PER  
108M: -74dBm@10% PER  
54M: -75dBm@10% PER  
11M: -86dBm@10% PER  
6M: -92dBm@10% PER  
1M: -95dBm@10% PER
- Wireless Function: Enable/Disable Wireless Radio, WDS Bridge, WMM, Wireless Statistics
- Wireless Security: 64/128-bit WEP, WPA/WPA2, WPA-PSK/WPA2-PSK encryptions

# Specifications

## Software

- Quality of Service: WMM, Bandwidth Control
- WAN Type: Dynamic IP/Static IP/PPPoE/PPTP(Dual Access)/L2TP(Dual Access)
- Management: Access Control, Local Management, Remote Management
- DHCP: Server, DHCP Client List, Address Reservation
- Port Forwarding: Virtual Server, Port Triggering, UPnP, DMZ
- Dynamic DNS: DynDns, NO-IP
- Access Control: Parental Controls, Local Management Control, Host List, White List, Black List
- Firewall Security: DoS, SPI Firewall, IP and MAC Address Binding
- Protocols: IPv4, IPv6
- Guest Network: 2.4GHz guest network

## Others

- Certification:  
CE, RoHS
- System Requirements:  
Microsoft Windows 98SE/NT/2000/XP/Vista™/7/8/8.1/10, MAC OS, NetWare, UNIX or Linux  
  
Internet Explorer 11, Firefox 12.0, Chrome 20.0, Safari 4.0, or other Java-enabled browser
- Environment:  
Operating Temperature: 0°C~40°C (32°F ~104°F)  
Storage Temperature: -40°C~70°C (-40°F ~158°F)  
  
Operating Humidity: 10%~90% non-condensing  
Storage Humidity: 5%~90% non-condensing
- Package Contents  
3G/4G Wireless N Router TL-MR3420  
  
Power Supply Unit  
  
Ethernet Cable  
  
Quick Installation Guide



For more information, please visit

<http://www.tp-link.com/en/products/details/TL-MR3420.html>

or scan the QR code left

Attention: This device may only be used indoors in all EU member states and EFTA countries.

Specifications are subject to change without notice. TP-Link is a registered trademark of TP-Link Technologies Co., Ltd. Other brands and product names are trademarks or registered trademarks of their respective holders. Copyright ©2017 TP-Link Technologies Co., Ltd. All rights reserved.

TP-Link Technologies Co., Ltd.

Building 24 (floors 1, 3, 4, 5) and 28 (floors 1-4) Central Science and Technology Park, Shennan Rd, Nanshan, Shenzhen, China

[www.tp-link.com](http://www.tp-link.com)

[www.tp-link.com](http://www.tp-link.com)

TP-Link 3G/4G Wireless N Router TL-MR3420